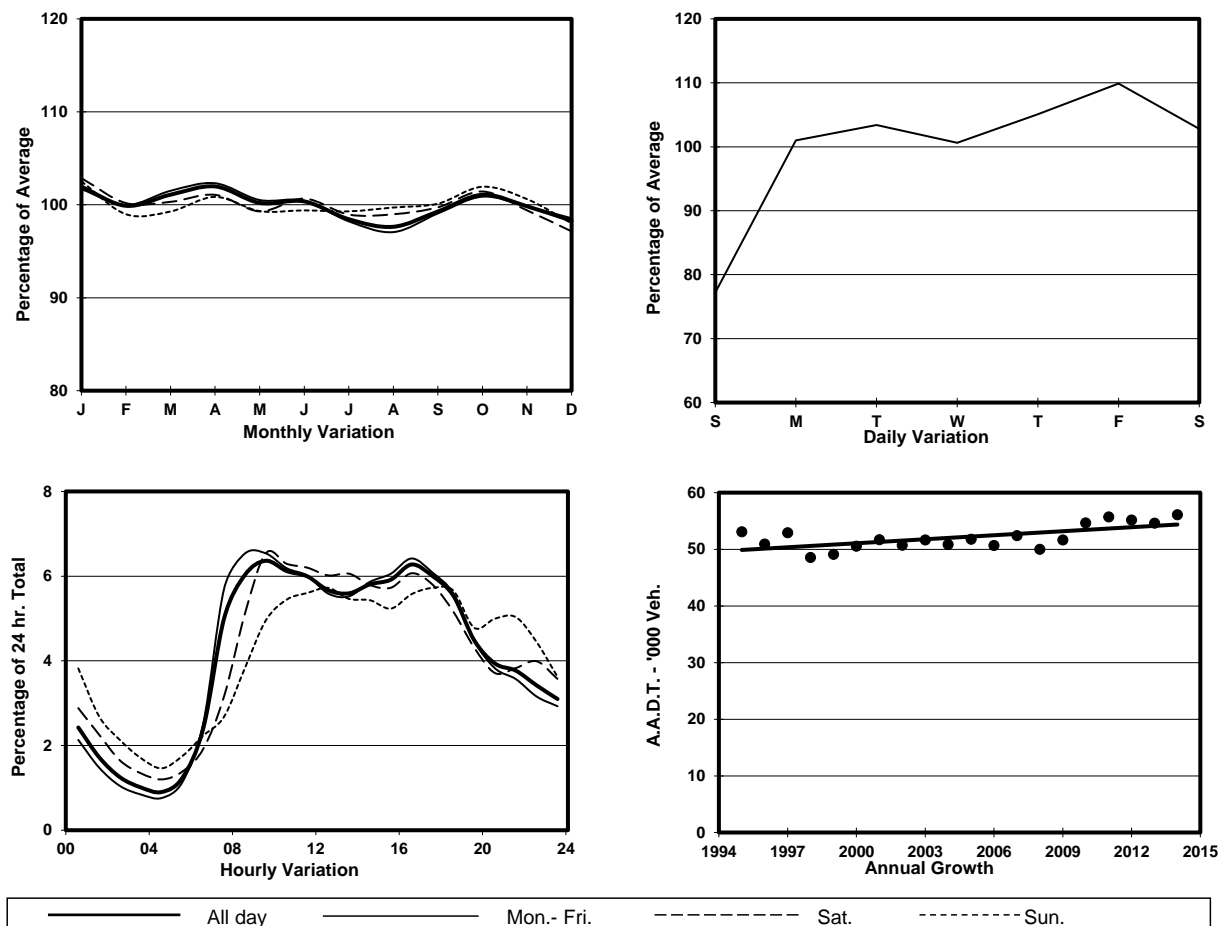


YEAR 2014  
 COVERAGE (B) STATION 2215  
 ROAD NETWORK MAJOR  
 ROAD TYPE EXPRESSWAY

LINK ISLAND EASTERN CORRIDOR (from MONG LUNG ST  
 to WING TAI RD INT)



## 1. TRAFFIC FLOW VARIATION AND GROWTH



## 2. TRAFFIC CHARACTERISTICS (BY DIRECTION)

Parameter	All - Day	Mon. - Fri.	Sat.	Sun.
<b>EAST BOUND</b>				
A.A.D.T.	27670	29120	28710	21790
R 12 / 24 - %	68.6	70.6	65.9	58.7
R 16 / 24 - %	85.7	87.1	83.2	79.6
AM Peak Hour	0900-1000	0900-1000	0900-1000	0900-1000
One-way flow at AM peak hour	1760	1950	1740	940
T - % (AM)	-	18.6	-	-
PM Peak Hour	1600-1700	1600-1700	1600-1700	1600-1700
One-way flow at PM peak hour	1810	1940	1840	1290
T - % (PM)	-	12	-	-
Prop.of commercial vehicles - 16 hr.	-	14.1	-	-
<b>WEST BOUND</b>				
A.A.D.T.	28430	29940	29630	22090
R 12 / 24 - %	72	73.6	69.9	64
R 16 / 24 - %	86.1	87.1	84.4	81.6
AM Peak Hour	0800-0900	0800-0900	0900-1000	0900-1000
One-way flow at AM peak hour	1920	2190	2070	1230
T - % (AM)	-	12.4	-	-
PM Peak Hour	1700-1800	1600-1700	1700-1800	1700-1800
One-way flow at PM peak hour	1730	1850	1730	1280
T - % (PM)	-	20.1	-	-
Prop.of commercial vehicles - 16 hr.	-	13.4	-	-

## 3. OTHER INFORMATION AND COMMENT

**4. Vehicle classification and occupancy - Monday to Friday**

Time		Class of vehicle									
		Motor	Private	Taxi	Private	PLB	Goods veh.		Non	Fr. Bus	
		Cycle	Car		LB		Light	M & H	Fr. Bus	SD	DD
0700-0800	Pro	3.5	27.3	31.0	2.5	0.0	21.6	5.4	3.8	0.1	4.8
	Ocp	1.0	1.4	1.8	7.3	0.0	1.6	1.2	15.6	1.0	41.6
0800-0900	Pro	4.3	42.7	19.4	1.9	0.0	17.3	7.4	4.2	0.1	2.8
	Ocp	1.1	1.4	1.9	2.8	0.0	1.5	1.2	10.1	1.0	45.7
0900-1000 Peak hour	Pro	2.7	33.0	19.7	2.5	0.0	27.5	7.8	2.8	0.1	3.9
	Ocp	1.0	1.3	1.9	2.8	0.0	1.6	1.2	4.7	1.0	15.1
1000-1100	Pro	3.3	27.0	19.8	0.9	0.0	32.2	12.0	1.4	0.1	3.3
	Ocp	1.0	1.6	1.8	2.3	0.0	1.5	1.2	5.8	1.0	14.3
1100-1200	Pro	2.0	32.0	17.5	1.3	0.0	33.5	9.3	1.8	0.1	2.5
	Ocp	1.1	1.5	1.7	1.8	0.0	1.6	1.3	7.3	1.0	18.0
1200-1300	Pro	2.0	33.0	17.7	1.2	0.0	29.3	10.6	3.9	0.1	2.1
	Ocp	1.0	1.4	1.6	4.9	0.0	1.5	1.2	9.1	1.0	19.4
1300-1400	Pro	1.8	29.3	17.9	1.9	0.0	33.6	9.6	3.8	0.1	2.2
	Ocp	1.0	1.4	1.7	1.9	0.0	1.6	1.3	5.3	1.0	19.3
1400-1500	Pro	2.3	30.8	15.8	0.9	0.0	33.1	11.9	2.4	0.1	2.7
	Ocp	1.0	1.4	1.5	3.6	0.0	1.6	1.3	2.6	1.0	17.5
1500-1600	Pro	2.1	29.0	20.2	1.9	0.0	33.8	8.6	1.5	0.1	2.9
	Ocp	1.1	1.5	1.6	4.1	0.0	1.5	1.3	8.9	1.0	17.7
1600-1700	Pro	3.3	30.8	21.4	1.4	0.0	27.5	8.2	4.0	0.0	3.4
	Ocp	1.1	1.4	1.5	4.7	0.0	1.5	1.3	5.2	0.0	21.3
1700-1800	Pro	4.4	37.1	19.1	1.9	0.0	23.1	5.0	4.6	0.1	4.8
	Ocp	1.0	1.4	1.8	2.4	0.0	1.5	1.5	3.1	1.0	22.7
1800-1900	Pro	4.4	49.9	15.9	1.3	0.0	19.4	3.0	2.8	0.1	3.2
	Ocp	1.0	1.4	1.8	2.8	0.0	1.4	1.6	2.8	1.0	47.8
1900-2000	Pro	6.6	53.5	19.6	0.3	0.0	11.8	2.2	0.8	0.1	5.1
	Ocp	1.1	1.2	2.1	1.5	0.0	1.6	1.6	2.4	1.0	28.7
2000-2100	Pro	3.3	44.1	29.3	0.6	0.0	10.9	1.8	2.0	0.1	8.0
	Ocp	1.1	1.6	1.8	2.7	0.0	1.6	1.6	5.7	1.0	13.8
2100-2200	Pro	2.9	44.8	33.3	0.2	0.0	9.7	2.2	0.2	0.5	6.1
	Ocp	1.3	1.5	1.9	3.0	0.0	1.4	1.2	1.0	1.0	17.7
2200-2300	Pro	2.4	46.7	39.5	0.2	0.0	4.1	1.3	0.0	0.2	5.5
	Ocp	1.2	1.4	1.7	1.0	0.0	1.5	1.2	0.0	1.0	15.5
16 hours	Pro	3.2	35.9	21.3	1.4	0.0	24.5	7.3	2.7	0.1	3.7
	Ocp	1.1	1.4	1.8	3.4	0.0	1.6	1.3	6.8	1.0	23.4

**Legend**

**Pro.** Proportion of vehicles in % (Sum may not add up to 100% due to figure rounding)  
**Ocp.** Average occupancy of vehicles  
**M&H** Medium and Heavy